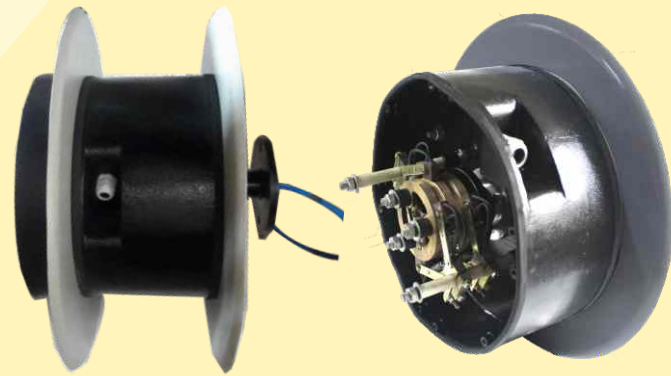


SPRING OPERATED CABLE REELING DRUM

Introduction

Spring operated Cable Reeling Drums are used for power supply to cranes & magnets. These reels wind & unwind cable on the drum in Horizontal & Vertical directions. The springs used in these drums are of High Quality Spring steel material (EN-42 J) Spiral spring type, for different cable size & length. The range of characteristic of spring, can be either single or in series / parallel spring. Spring Operated CRD are available in 3 Models. However can be supplied as per customers requirements.



Technical Data

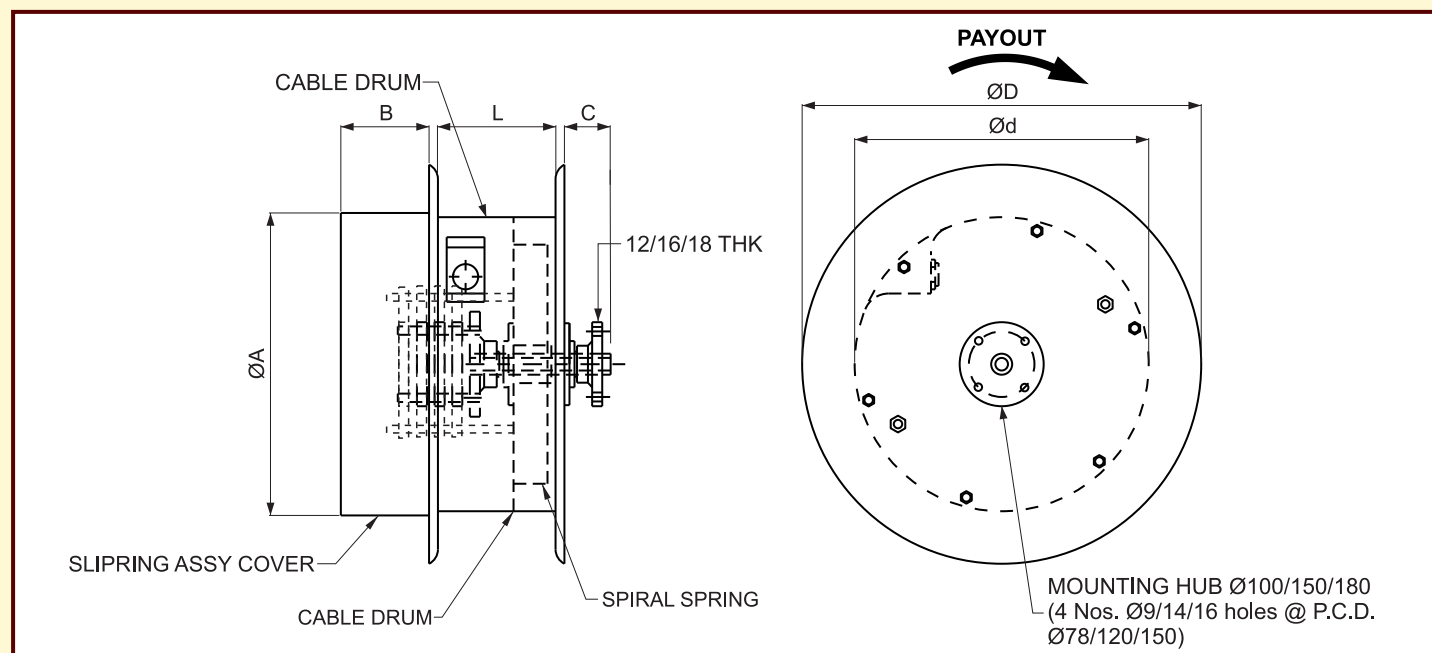
Type	Spring Operated Cable Reeling Drums
Drums	Steel Fabricated Drum with Powder Coating Finish
Springs	Spiral springs -EN-42 J.
Slip ring Assembly	Gunmetal Slip-rings are assembled on Flange with Studs & Nylon Bushes
Carbon Brush Assembly	Carbon Brushes Assly, mounted on stud
Bearings	Ball Bearings
Mounting Hub	For Mounting of CRD

Technical Specification

MODEL	CRD-SP 350 x 140	CRD-SP 350 x 190	CRD-SP 400 x 190
DRUM FLANGE DIA (ØD) -mm	475	550	600
DRUM DIA (Ød) -mm	350	350	400
DRUM LENGTH (L) -mm	140	190	190
SLIPRING COVER (A) (mm)	360	360	410
WIDTH SR COVER (B) (mm)	105	105	105
HUB DISTANCE (C) (mm)	55	95	110
CABLE DIA (mm)	12 / 26	12 / 32	12 / 36
CABLE LENGTH APPROX. INCLUDING DEAD TURNS-M	25 / 16	45 / 16	45 / 16
CABLE LAYOUT	HORIZONTAL/ VERTICAL	HORIZONTAL/ VERTICAL	HORIZONTAL/ VERTICAL

Preliminary Dimensions

Dimensional Drawing of CRD



H. O. Unit -I: C-15/16, Nand Jyot Industrial Estate, Andheri-Kurla Road, Mumbai - 400072,
Tel : (022) 42469700-30
E-mail : sales@socgroup.in

Unit - II: Plot No. 4912, G. I. D. C., Phase IV, Vatva, Ahmedabad - 382445
Tel.: (079) 68169700/702/712
E-mail : enquiry2@socgroup.in

Visit us at :
www.speedocontrols.com
www.socremote.com
www.socjoystick.com

SPEED-O-CONTROLS PVT. LTD. 

INSULATED CONDUCTOR BARS V5