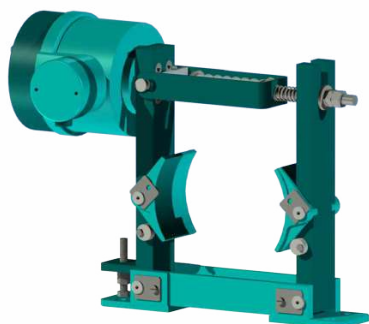
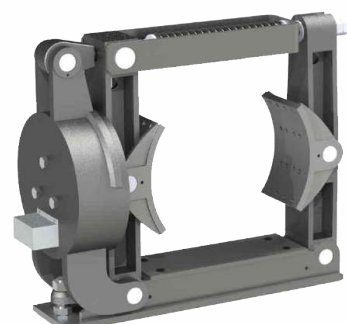




## DM 100 TO DM 315



## DM 400 TO DM 800



## INTRODUCTION

Speed-O-Control make DC Electro magnetic brakes are suitable for 220 VDC supply for a wide range of drum size from 100mm to 800mm.

DC Electro-Magnetic shoe brakes are actuated by an energy stored in the compression spring and is released by a DC electromagnet. Thus, the brake is fail-safe and is normally applied. The DC magnet coil when energized releases the brake.

These are especially suited for Steel Mills, Hoists and Elevators.

## SALIENT FEATURES

- Robust construction and simple design
- Fabricated / Cast Iron body
- Reliable braking action
- Efficient transmission of brake force and action
- Maintenance free - no working fluids, oils seals etc
- Brake shoe replacement through hinged pins only, no dismantling required
- Magnet housing is of dust proof construction
- Coil is encapsulated

## BRAKE SELECTION

The brake torque must be  $\Rightarrow$  than motor full load as referred with drum. Formula as below:

$$T = \text{Torque in Kgm} = \frac{716 \times \text{Hp}}{\text{rpm}}$$

$$T = \text{Torque in Nm} = \frac{9552 \times \text{Kw}}{\text{rpm}}$$

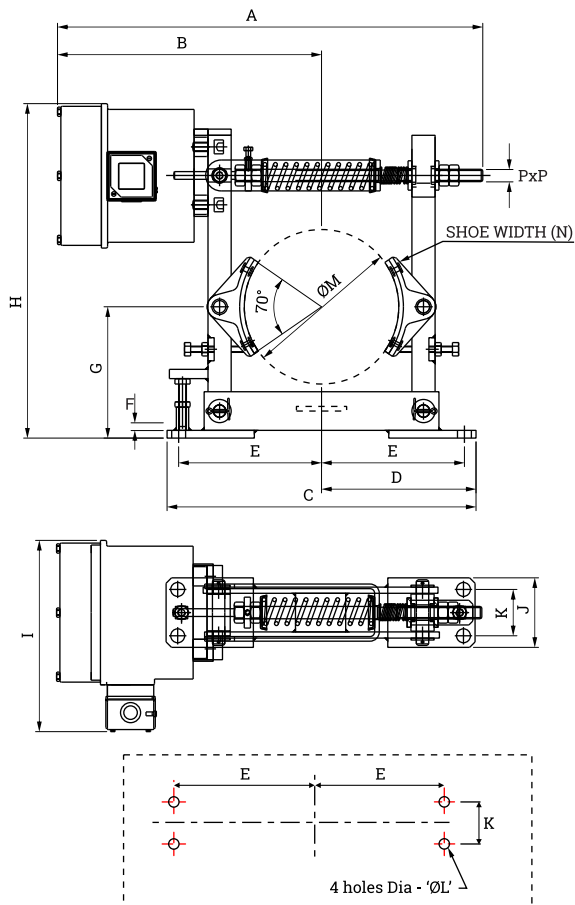
Where Hp/Kw = motor output & rpm = Rev/minute

## TECHNICAL SPECIFICATION

Tech. Parameter	Description
Drum Dia. Range	100mm - 600mm
Braking Torque Range	2 KgM - 355 KgM
Input Voltage	415V AC through rectifier
Inrush Voltage	350 VDC
Holding Voltage	110 VDC
Rating	Continuous
No. of operations	720 / hr.
Coil	Copper wire epoxy resin encapsulated
Insulation	H Class



## DM 100 TO DM 315

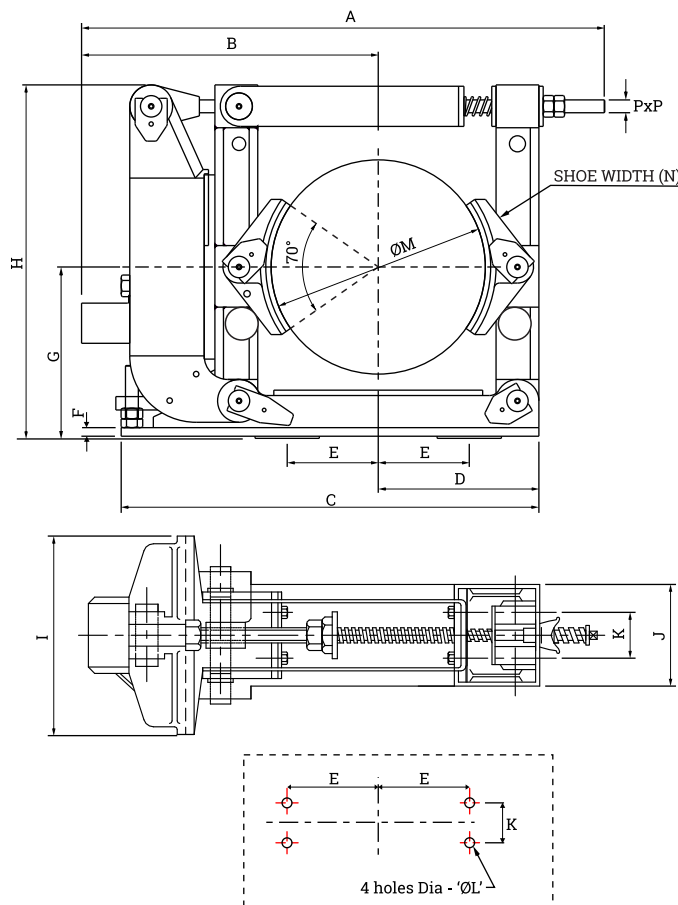


Mounting Details

BRAKE TYPE	DRUM DIA (M)	SHOE WIDTH (N)	BRAKE TORQ. (Kg-m)	WT. in (Kg.)	A	B	C	D
DM 100	100	70	2	16	391	239	260	130
DM 150	150	70	10	36	440	310	350	180
DM 160	160	70	10	36	440	315	350	180
DM 200	200	90	12.5	41	571	342	400	190
DM 250	250	110	35	70	600	413	480	245
DM 300	300	140	50	94	753	443	580	285
DM 315	315	140	50	94	753	443	600	285

BRAKE TYPE	E	F	G	H	I	J	K	L	P
DM 100	110	6	110	280	210	75	40	13	8x8
DM 150	155	6	150	390	260	75	50	13	10x10
DM 160	155	6	150	390	260	75	50	13	10x10
DM 200	185	8	170	440	260	90	60	18	11x11
DM 250	220	10	200	510	310	110	70	20	12x12
DM 300	265	12	230	580	310	120	80	22	14x14
DM 315	265	12	230	570	310	125	80	22	14x14

## DM 400 TO DM 800



Mounting Details

BRAKE TYPE	DRUM DIA (M)	SHOE WIDTH (N)	BRAKE TORQ. (Kg-m)	WT. in (Kg.)	A	B	C	D
DM 400	400	180	120	240	780	423	554	170
DM 500	500	200	190	364	915	488	609	205
DM 600	600	240	355	600	1090	566	724	250
DM 700	700	280	575	960	1512	770	834	290
DM 800	800	320	910	1360	1628	853	944	325

BRAKE TYPE	E	F	G	H	I	J	K	L	P
DM 400	260	16	320	660	360	180	90	25	16x16
DM 500	350	16	400	830	460	200	100	25	20x20
DM 600	350	20	475	950	520	250	126	38	22x22
DM 700	400	22	490	1108	440	290	150	38	22x22
DM 800	480	22	510	1255	510	325	180	38	22x22

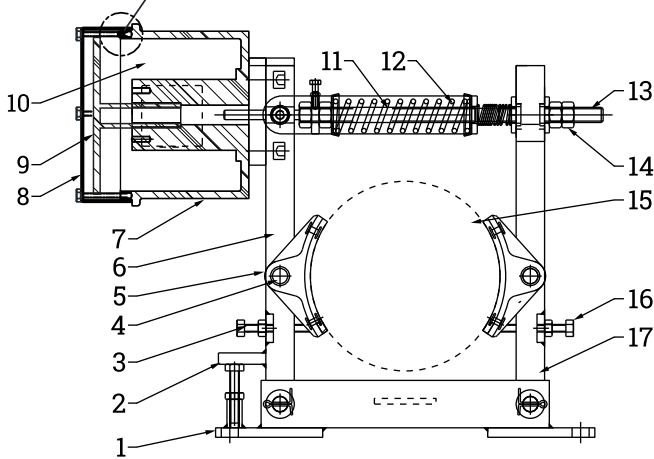
**Note :** (1) All dimension are in mm. (2) Dimensions E, G, H & K are maintained as shown  
 (3) \* Approximate weight (4) Other dimensions are for guidance only.



## DM 100 TO DM 315

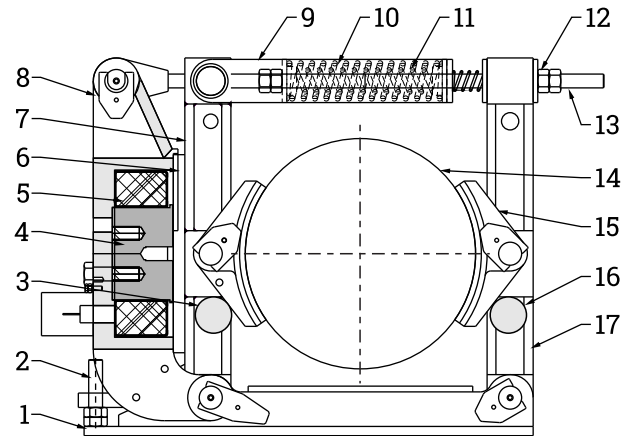
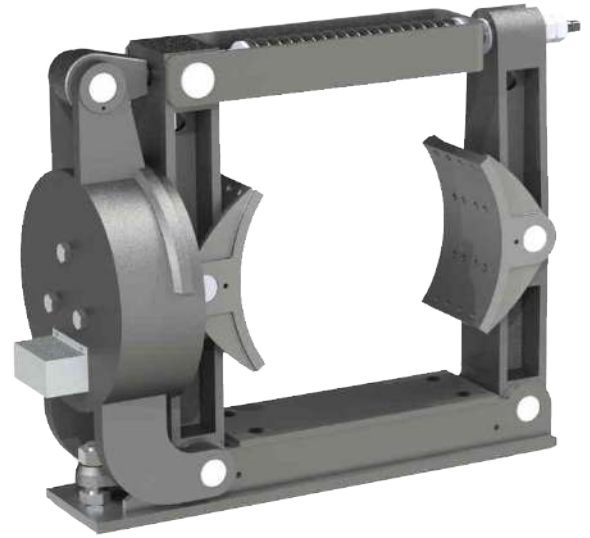


MINM. 2mm GAP SHOULD BE MAINTAINED



- |                               |                               |
|-------------------------------|-------------------------------|
| (01) Base                     | (10) Magnet Coil              |
| (02) Stopper Screw            | (11) Compression Spring       |
| (03) Main Arm Shoe adj. screw | (12) Fork                     |
| (04) Shoe hinge pin           | (13) Tie Rod                  |
| (05) Brake Shoe               | (14) Tie Rod Nuts             |
| (06) Main Arm                 | (15) Brake Drum               |
| (07) Magnet Housing           | (16) Side Arm Shoe adj. screw |
| (08) Housing Cover            | (17) Side Arm                 |
| (09) Armature                 |                               |

## DM 400 TO DM 800



- |                               |                               |
|-------------------------------|-------------------------------|
| (01) Base                     | (10) Compression Spring-1     |
| (02) Stopper Screw            | (11) Compression Spring-2     |
| (03) Main Arm Shoe adj. screw | (12) Tie Rod Nuts             |
| (04) Shoe hinge pin           | (13) Tie Rod                  |
| (05) Magnet Coil              | (14) Brake Drum               |
| (06) Armature                 | (15) Brake Shoe               |
| (07) Main Arm                 | (16) Side Arm Shoe adj. screw |
| (08) Magnet Housing           | (17) Side Arm                 |
| (09) Fork                     |                               |