

A.C. ELECTROMAGNETIC BRAKES- 3PHASE EMT SERIES



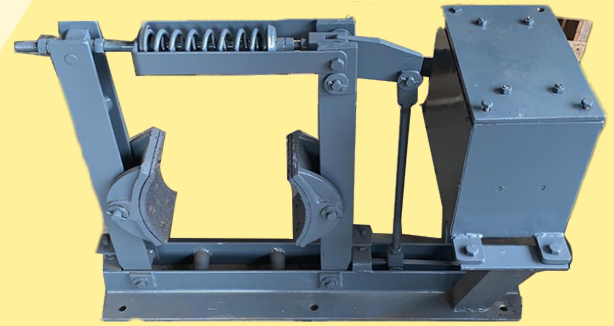
INTRODUCTION

A.C drum brakes are suitable for three phase A.C supply up to 440V and are available for drum diameters of 150mm to 600mm and braking torque up to 200 kg-m.

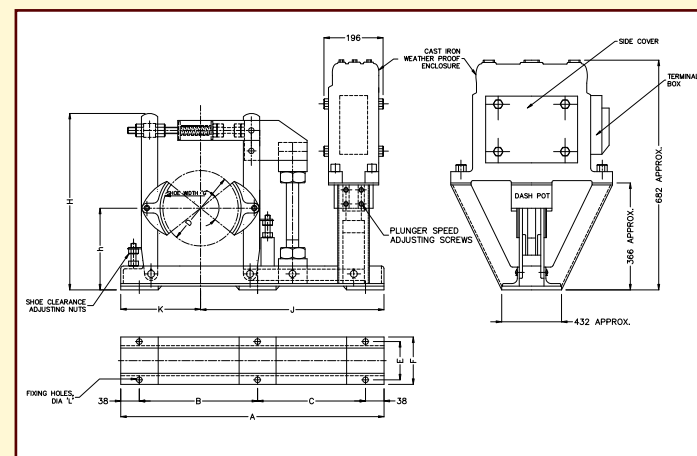
CONSTRUCTIONAL & WORKING

The shoes and the base of the brakes are of graded cast iron. Other components are fabricated steel. The lever is hinged on the main arm, which is connected to the side arm through a tie rod and is stressed by a pre-loaded compression spring. The compression of the spring can be adjusted to set the braking torque to the desired value. The brake liner of selected quality material and are riveted to the shoes by aluminium rivets.

A.C. selenoids with laminated magnetic sheet metal house a copper magnetizing coil that is impregnated with Class F materials. The plunger which is connected to the lever, is drawn into the coil, when it is energised with A.C source. This loads the spring and releases the brakes shoes from the brake drum. When the supply is cut off, the plunger is pulled out of the coil, and the spring force clamps the brake shoes on the brake drum and the brake are applied.



G.A.DRAWING



FEATURES

1. The brake is fail-to-safety. The brake is applied in absence of A.C. current and is released when the supply is restored.
2. High-quality brake lining material ensures consistent braking torque and reliable operation.
3. Clean environmental working, less noise.
4. Braking torque can be adjusted easily and quickly.
5. Ease of maintenance.

DIMENSION DETAILS

MODEL NO	DRUM DIA		BRAKING TORQUE		A	B	C	E	F	G	h	H	J	K	L
	INCH	MM	kg.m	lb.ft											
EMT - 150	6	150	16	116	710	330	304	100	140	70	240	500	522	190	13
EMT - 200	8	200	21.25	154	762	355	331	127	178	89	264	520	546	216	13
EMT - 250	10	250	26.60	192	838	431	331	156	130	108	276	543	594	244	16
EMT - 300	12	300	58.25	421	890	407	407	165	230	127	292	645	610	280	16
EMT - 380	15	380	72.80	526	965	431	458	165	242	152	314	682	647	318	16
EMT - 400	16	400	80	580	985	441	468	180	236	180	314	682	657	328	20
EMT - 460	18	460	125	900	1030	484	484	190	254	162	340	720	669	356	21
EMT - 500	20	500	150	1100	1104	524	504	215	302	200	360	720	689	415	25
EMT - 600	24	600	50% OF COIL RATING		1385	710	575	310	405	230	485	990	955	430	26

NOTES

1. Brake type 6 denotes A.C. three phase 6" drum diameter (inch series)
2. Brake type EMT 150 denotes A.C. three phase 150mm diameter (metric series)