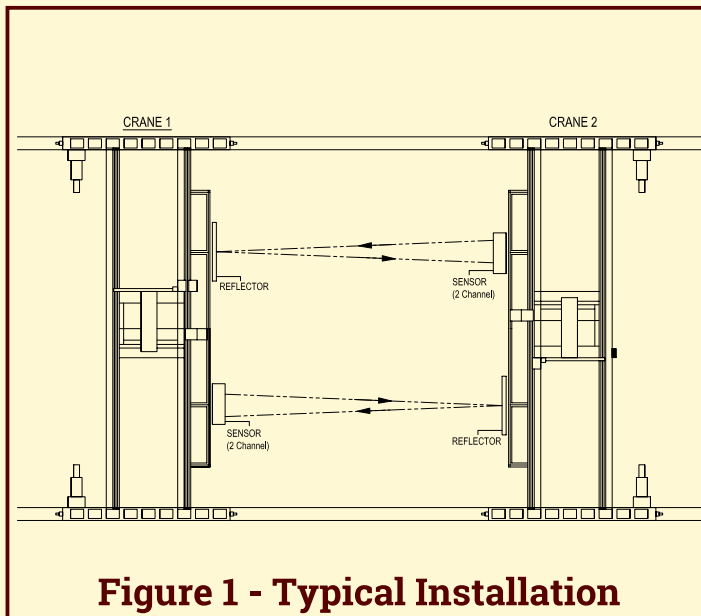
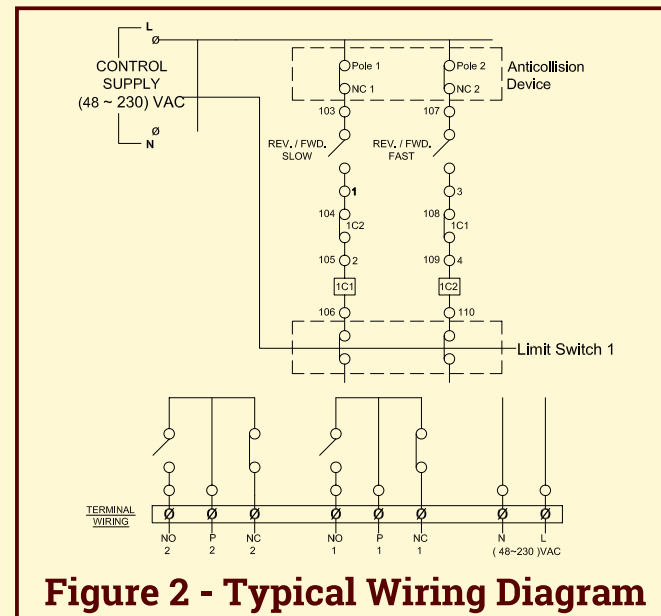


## Installation Procedure:

1. Mount the Transmitter/Emitter(Control Unit) on one crane as shown in installation scheme.(Figure 1.)
- 2.Connect the power supply as per the connection diagram. (Figure 2.)
3. Press the Laser switch and mark the point for refelctor mounting. Mount the reflector on the second crane.
4. Similarly follow the procedure to mount the control unit and reflector for the other crane.
5. Connect the relay output as shown in the figure.  
The Anti-collision device works like an LT limit switch.



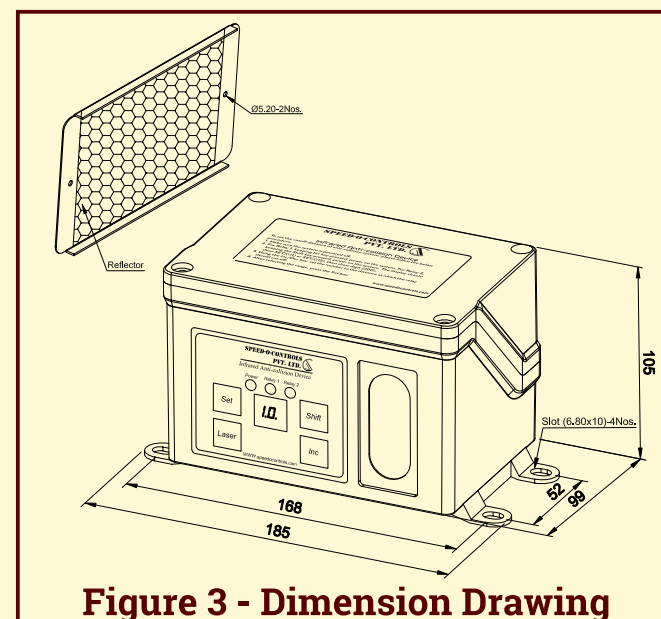
**Figure 1 - Typical Installation**



**Figure 2 - Typical Wiring Diagram**

## Range Adjustments Settings

- 1.Make sure the system is powered off.
2. For Relay 1, keeping Inc key pressed, power on the system. For Relay 2, keeping the Shift key pressed, power on the system. The display should show SET/(r1) or SET/(r12), then show digit (d00).
3. Using the Inc. key, set the number to the distance at which the relay should cut-off.
4. After selecting the range, press the Set key.
- 5.Restart the system.



**Figure 3 - Dimension Drawing**