

INTRODUCTION

Lever type Limit Switch (LLS) operates the control change-over contacts of motor of an moving equipments when a cam moving with loads actuates the Lever of limit switch. This to turns the cams on a square shaft and operate the NO/NC change over contacts elements.

APPLICATION :

A two (or more) contact elements are operated by respective rotating cams, which are suitably fixed on a square cam shaft turned by a lever. The contacts operate at $\pm 15^\circ$ from central neutral position.

TECHNICAL DATA :

Body Material	Aluminium Die Cast (Powder Coated)
Model	LS
Protection Degree	IP-55 Confirming to (IS/IEC 60529) 2001
Mounting Position	Floor
Cable Entries	2, 3/4" Conduit
No. of Contacts	MAX 2
Contact Material	Silver Cadmium
Wire Connection	Screw Terminal
Rated Voltage	500 V.A.C. Max
Thermal Test Current	10 A/ 40 A

***Also available in Thermoplastic**

ROLLER OPERATING LEVER L.S

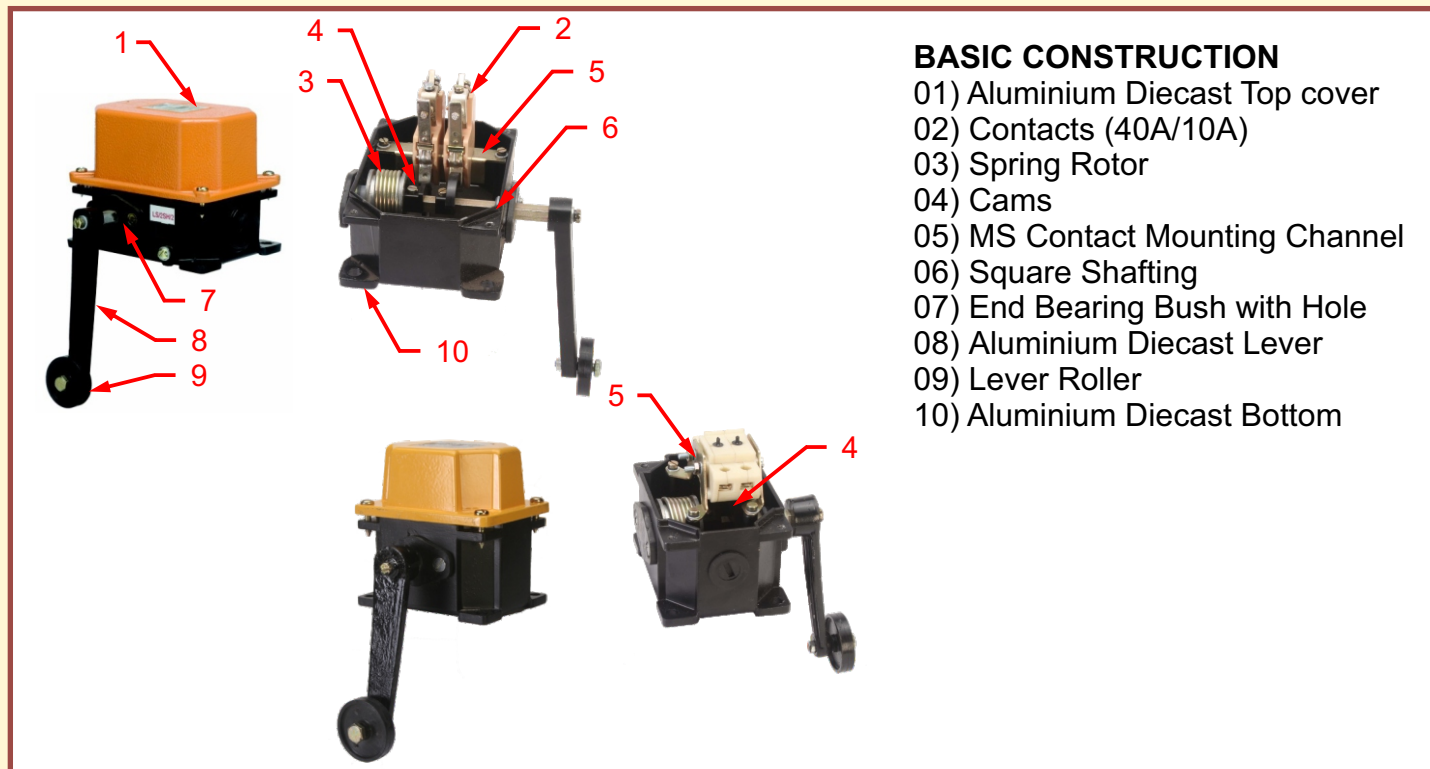
Are used for E.O.T. Cranes, Wagon shunting devices, Elevators, Travel Mechanism or such linearly moving mechanisms to prevent over-travel. The position of operating lever is in up/down.

DESIGN :

The aluminium die-cast body, lever and cover of the limit switch are finished by powder coating treatment. The cam shaft is mounted in the housing on moulded nylon bushes (Bearing) are fixed through the front and rear walls.

SETTING OF L.L.S.:

- Mount LLS Base on Mounting plate
- (Dimensions as per below Drg.)
- Install LLS with Mounting Plate on the CT/LT of Crane by setting of extreme safe distance.
- Mount Striker Plate on Hoist.
- When the crane reaches its extreme set safe distance, the strike plate will strike to the roller operated Lever and Lever will actuate at $\pm 15^\circ$ rotation and the Contacts will be operated from NC to NO & Crane will be stopped.



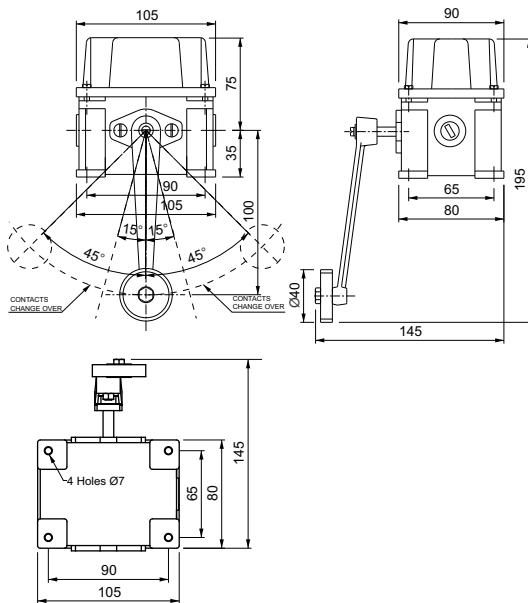
BASIC CONSTRUCTION

- 01) Aluminium Diecast Top cover
- 02) Contacts (40A/10A)
- 03) Spring Rotor
- 04) Cams
- 05) MS Contact Mounting Channel
- 06) Square Shafting
- 07) End Bearing Bush with Hole
- 08) Aluminium Diecast Lever
- 09) Lever Roller
- 10) Aluminium Diecast Bottom

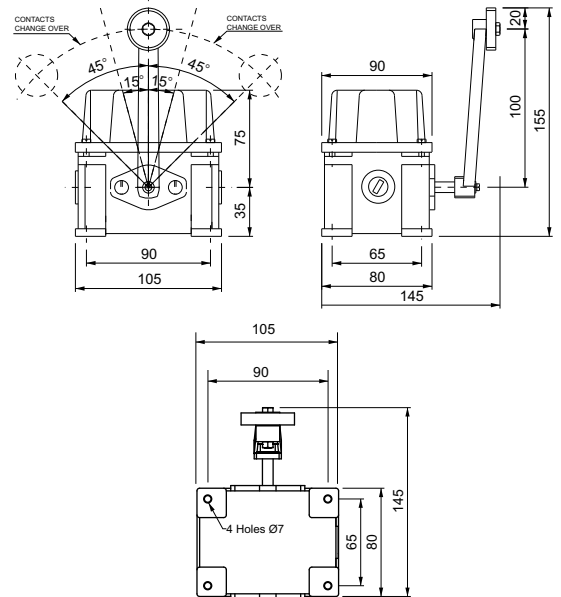
LEVER LIMIT SWICH-LS (MANUAL)



10 AMPS DRAWING :

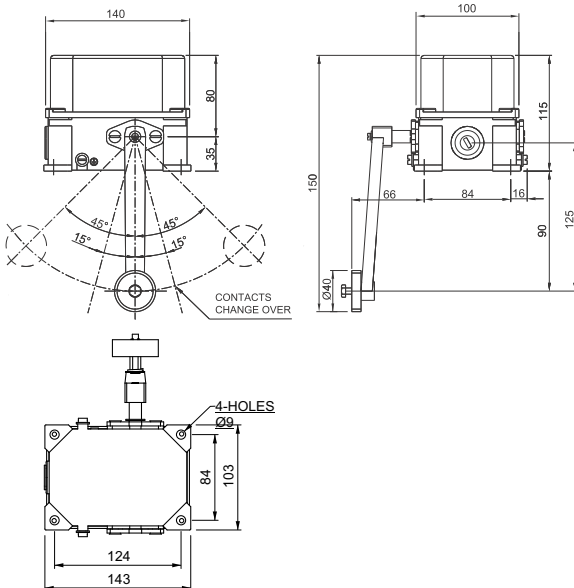


**Lever Limit Switch
(Downward Lever)**

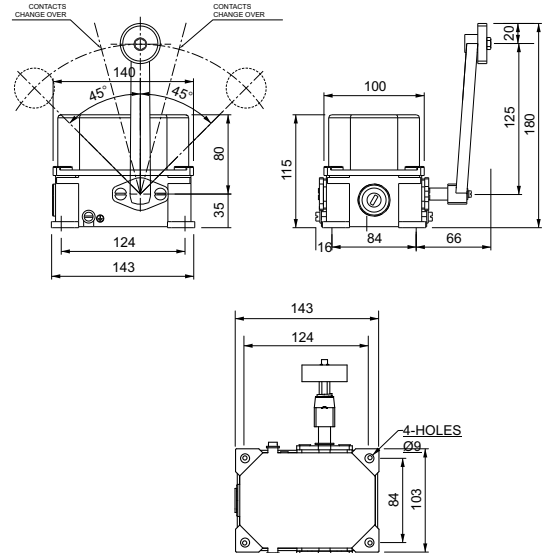


**Lever Limit Switch
(Upward Lever)**

40 AMPS DRAWING :



**Lever Limit Switch
(Downward Lever)**



**Lever Limit Switch
(Upward Lever)**