

# STEEL MILL DUTY LEVER LIMIT SWITCH - ULS (MANUAL)



## INTRODUCTION

Lever Type Limit Switch operates the control changeover contacts of motor of any moving equipments when a cam moving loads actuates the lever of limit switch. This turns the cams on a square shaft and operate the NO/NC change over contacts elements.

## APPLICATION :

A two (or more) contact elements are operated by respective rotating cams, which are suitably fixed on a square cam shaft turned by a lever. The contacts operate at  $\pm 15^\circ$  from central neutral position.

## TECHNICAL DATA :

Limit Switch	Steel Mill Duty
Type	Lever Operated
Model No	ULS
Body Material	Aluminium
Protection Degree	IP-55 Confirming to (IS/IEC 60529) 2001
Mounting Position	Horizontal with weight
Cable Gland	PG - 27
No. of Contacts	MAX 2
Contact Material	Double Break, Silver Cadmium
Wire Connection	Screw Terminal
Rated Voltage	Up to 500 V.A.C.
Thermal Test Current	10 A

## ROLLER OPERATING LEVER L.S :

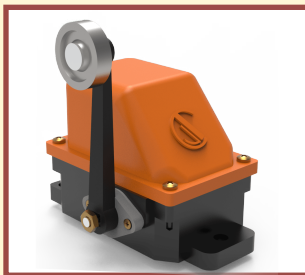
Are used for E.O.T. Cranes, Wagon shunting devices, Elevators, Travel Mechanism or such linearly moving mechanisms to prevent over-travel. The position of operating lever is in up/down.

## DESIGN :

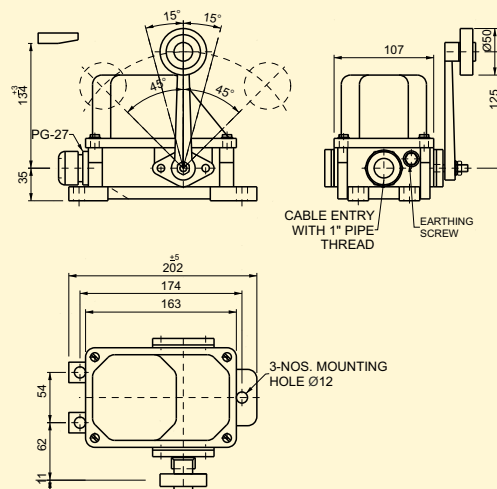
The aluminium die-cast body, lever and cover of the limit switch are finished by powder coating treatment. The cam shaft is mounted in the housing on moulded nylon bushes (Bearing) are fixed through the front and rear walls.

## SETTING OF ULS.:

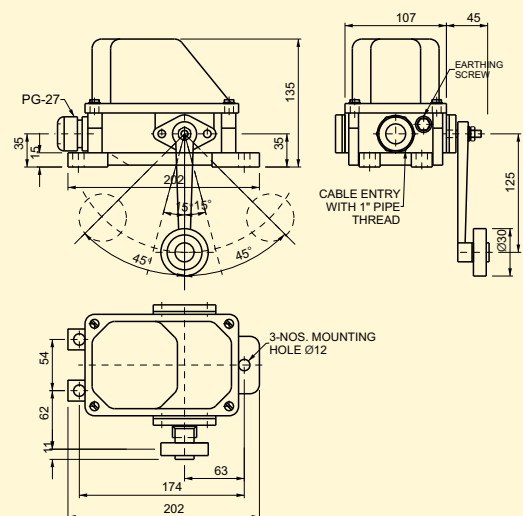
- Mount LLS Base on Mounting plate (Dimensions as per below Drg.)
- Install LLS with Mounting Plate on the CT/LT of Crane by setting of extreme safe distance.
- Mount Striker Plate on Hoist.
- When the crane reaches its extreme set safe distance, the strike plate will strike to the roller operated Lever and Lever will actuate at  $\pm 15^\circ$  rotation and the Contacts will be operated from NC to NO & Crane will be stopped.



Lever Limit Switch- ULS

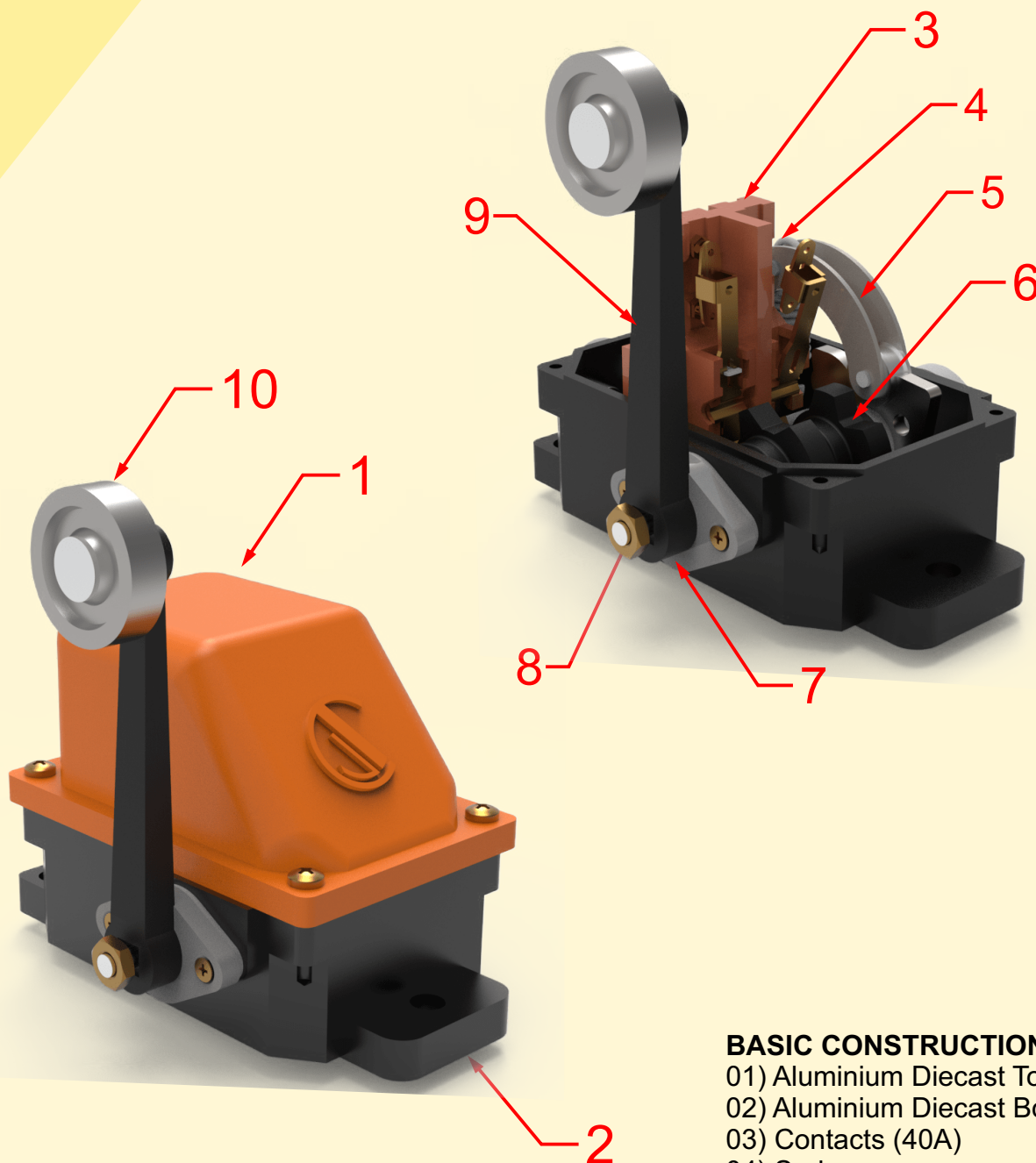


Lever Limit Switch (Upward Lever)



Lever Limit Switch (Downward Lever)

# STEEL MILL DUTY LEVER LIMIT SWITCH - ULS (MANUAL)



## BASIC CONSTRUCTION

- 01) Aluminium Diecast Top cover
- 02) Aluminium Diecast Bottom
- 03) Contacts (40A)
- 04) Spring
- 05) MS Lever with cam plate
- 06) Cams
- 07) End Bush with Hole
- 08) Main Shaft with Lock Nut
- 09) Aluminium Diecast Lever
- 10) Lever Roller