

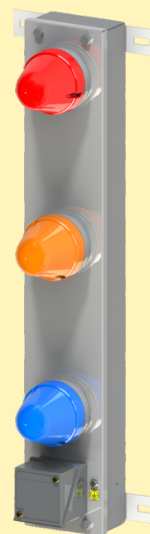
# DSL Indicating Lamp



## Introduction

In DSL Busbar System to protect crane from single phasing we have come out with phase indicator system. **Speed-O-Controls Pvt. Ltd.**, a leading DSL Lamp Indicator manufacturer, from Mumbai, Maharashtra India.

We have used best quality L.E.D. Indicator Lamps with proper heat sink to obtain long life from the indicator the body of the indicator is powder coated this system are supplied with long wire which can be directly connected to bus bar or panel board of crane this indicator can also been used in factories or on machine to show phase failure.



## Optional Customization

- 1) Input Voltage 690V, 50Hz
- 2) Fuse in series with input supply.
- 3) MCB in series with input supply.

## Technical Data

SPECIFICATION	DATA
Power supply	3 Phase 3 wire star connected power supply
Power consumption	4 Watts
Indication color	Red, Yellow & Blue
Visibility	200-300 Meters
Body	Metallic, Siemens Grey powder Coated
Installation	On 4 Bolts 6 mm size
Size	PCB diameter 64mm
Light Source	Light Emitting Diode
Color rendering Index	98 CRI
Luminous Intensity	3000 Mcd
LED size	L=5.6mm, W=3.0mm
No. of LED's per Indicator	46- LED's
Working Voltage	26 Volt's DC
Max Input Voltage	Three phase three wire 460 Vols AC, 50Hz
Input Volts	Three phase Three wire 415 Volts AC, 50Hz (System Supply)
Lamp Operating Voltage	230 Volts AC (Phase-to-Neutral, per lamp)
Type of power supply	3-Phase transformer less capacitive power supply
Life expectancy	5 Years
Operating temperature	-20° C to + 70° C

## Indication Lamp Diagram

